

**2016 Township of Severn  
Ward Boundary Review  
Comment Sheet**

Please leave with Staff or one of the Consultants at the Open House  
or submit to the Clerk's Office by September 6, 2016.

Name (optional) \_\_\_\_\_

Address \_\_\_\_\_

Present Ward \_\_\_\_\_

Based on the Terms of reference for the 2016 Severn Ward Boundary Review, please rank the Preliminary Options (1 = most preferred, 6 = least preferred):

First Preference \_\_\_\_\_ Second Preference \_\_\_\_\_

Third Preference \_\_\_\_\_ Fourth Preference \_\_\_\_\_

At-large Election \_\_\_\_\_ Make No Change \_\_\_\_\_

Please provide reasons for your preferences:

Thank you for participating in the Severn Township Ward Boundary Review. Personal information, if provided, is collected under the authority of The Municipal Act and will be used as part of the Ward Boundary Review. Personal information collected may become part of the public record. Questions regarding the collection of personal information may be directed to the Township Clerk.

For additional information, please visit the Township of Severn website at

[www.townshipofsevern.com](http://www.townshipofsevern.com) or contact the Township Clerk at

[sgoerke@townshipofsevern.com](mailto:sgoerke@townshipofsevern.com)

Terms of Reference: Report C15-035, page 2

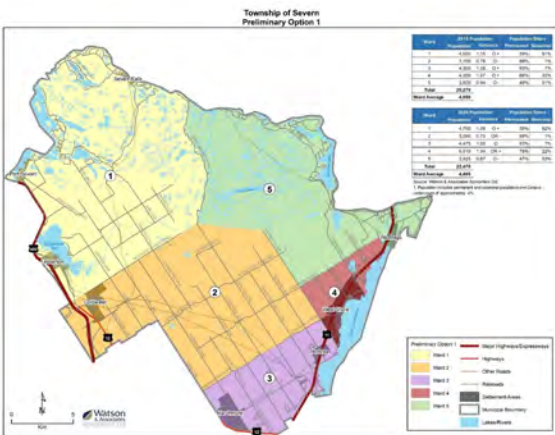
While equal representation is to be considered, there are also additional factors to consider:

- Preserve communities of interest
- Recognition of natural resources (rivers, lakes, swamps) or man-made barriers or dividers (highways, railways) for ward boundaries
- Recognition of areas of growth/decline
- Recognition of density (ward with a few people over a large population in a small geographic area)
- Accessibility/communication

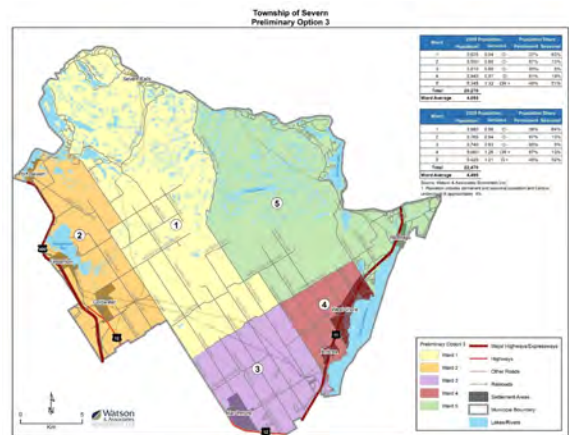
While creating the wards for Severn Township, consideration was given to transportation routes, the number of electorate and areas of common interest, which resulted in the current five (5) ward system.

The Four Preliminary Options

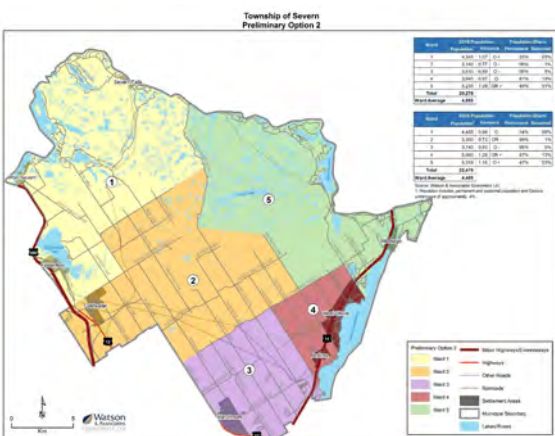
Preliminary Option 1



Preliminary Option 3



Preliminary Option 2



Preliminary Option 4

